



SILENCER 2018

Low flow resistance, good sound absorption,
small construction with high benefit



FEATURES: Low flow resistance, good sound absorption, small construction with high benefit, budget, available fastening accessories.

RANGE OF APPLICATION: Diaphragm pumps, Reciprocating pumps, Rotary pumps, Vibrating pumps and others.

APPLICATION: Medical technology, Laboratory equipment technology, Industrial technology, Appliances technology.

■ TYP 30 - Filter

Materials

Housing material: Polystyrene black
 Inside part material: Polyurethane soft foam
 Filter material: Cyanacrylate - adhesive
 Glue: Polystyrene black
 Connection nozzle: Polystyrene black

Technical Data

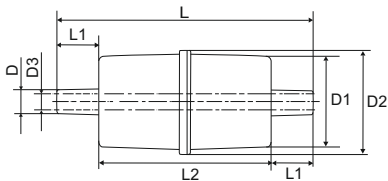
Operating pressure max.: 0,8 bar
 Temperature resistance: max. 70°C
 Medium: Air
 Connection nozzle: conical

Order Data

Art. No.	Connector for hose								Weight
	L _w mm	L mm	L ₁ mm	L ₂ mm	D mm	D ₁ mm	D ₂ mm	D ₃ mm	
LYF0300.030	6	80,0	13,5	53,0	7,6	29,0	33,0	4,0	10 g

Flow

Pressure mbar	-10	-20	-30	-50	-70	-80	-90	-100	-140
Suction-side l/min	6,0	10,5	14,5	21,0	26,0	28,5	30,5	32,0	-
Pressure-side l/min	11,0	15,0	18,0	23,5	29,0	30,5	31,5	37,5	40,0





■ TYP 49 - Single silencer without filter elements

Materials

Housing material: Polystyrene white / black / ABS grey
 Inside part material: Polystyrene / ABS grey
 Polyethylene
 Glue: Cyanacrylate - adhesive
 Connection nozzle: Polystyrene white / ABS grey

Technical Data

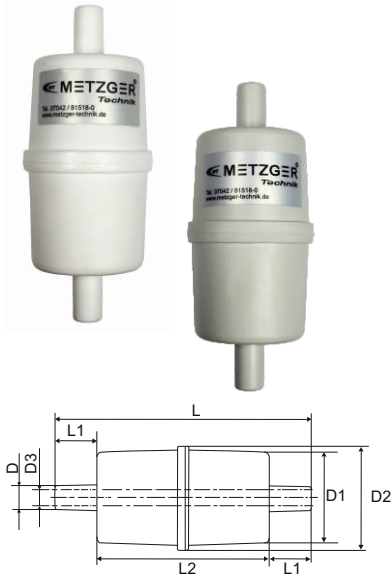
Operating pressure max.: 0,8 bar
 Temperature resistance PS: max. 70°C
 Temperature resistance ABS: max. 100°C
 Medium: Air
 Connection nozzle: conical

Order Data

Art. No.	Connector for hose Lw mm	L mm	L1 mm	L2 mm	D mm	D1 mm	D2 mm	D3 mm	Weight	Material
LYD0500.049	6	80,0	13,5	53,0	7,6	29,0	33,0	4,0	10 g	PS
LYD0501.049	6	80,0	13,5	53,0	7,6	29,0	33,0	4,0	10 g	ABS

Flow

Pressure mbar	-10	-20	-30	-50	-70	-80	-90	-100	-140
Suction-side l/min	7,3	11,3	14,3	19,3	23,2	25,1	27,0	28,3	-
Pressure-side l/min	5,4	9,0	12,3	18,3	24,0	26,1	28,3	30,4	-



■ TYP 50 - Silencer with filter element

Materials

Housing material: Polystyrene white / black / ABS grey
 Inside part material: Polystyrene / ABS grey
 Polyethylene
 Filter material: Polyurethane soft foam
 Glue: Cyanacrylate - adhesive
 Connection nozzle: Polystyrene white / ABS grey

Technical Data

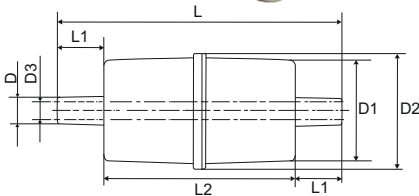
Operating pressure max.: 0,8 bar
 Temperature resistance PS: max. 70°C
 Temperature resistance ABS: max. 100°C
 Medium: Air
 Connection nozzle: conical

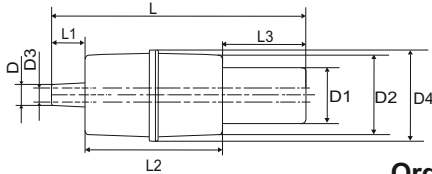
Order Data

Art. No.	Connector for hose Lw mm	L mm	L1 mm	L2 mm	D mm	D1 mm	D2 mm	D3 mm	Weight	Material
LYD0500.050	6	80,0	13,5	53,0	7,6	29,0	33,0	4,0	14 g	PS
LYD0501.050	6	80,0	13,5	53,0	7,6	29,0	33,0	4,0	15 g	ABS

Flow

Pressure mbar	-10	-20	-30	-50	-70	-80	-90	-100	-140
Suction-side l/min	4,5	8,0	11,5	15,5	19,5	20,5	22,0	23,5	28,5
Pressure-side l/min	5,0	10,0	12,5	15,5	17,0	19,0	19,5	20,0	27,0





■ TYP 51 - Silencer with aluminium filter

Materials

Housing material: Polystyrene white / black / ABS grey
 Inside part material: Polystyrene / ABS grey
 Polyethylene
 Filter material: Polyurethane soft foam
 Glue: Cyanacrylate - adhesive
 Connection nozzle: Polystyrene white / ABS grey
 Connection parts: brass bright
 Aluminium filter: Aluminium and felt material

Technical Data

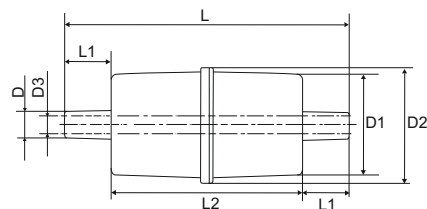
Operating pressure max.: 0,8 bar
 Temperature resistance PS: max. 70°C
 Temperature resistance ABS: max. 100°C
 Medium: Air
 Connection nozzle: conical

Order Data

Art. No.	Connector for hose Lw mm	L mm	L1 mm	L2 mm	L3 mm	D mm	D1 mm	D2 mm	D3 mm	D4 mm	Weight	Material
LYD0500.051	6	96,0	13,5	53,0	29,5	7,6	20,0	29,0	4,0	33,0	20 g	PS
LYD0501.051	6	96,0	13,5	53,0	29,5	7,6	20,0	29,0	4,0	33,0	21 g	ABS

Flow

Pressure mbar	-10	-20	-30	-50	-70	-80	-90	-100	-140
Suction-side l/min	5,0	10,5	12,5	15,5	23,0	26,0	27,5	29,5	30,0
Pressure-side l/min	7,0	12,0	16,0	21,5	28,0	29,5	32,0	33,5	35,0



■ TYP 52 - Silencer with 2 filter elements

Materials

Housing material: Polystyrene white / black / ABS grey
 Inside part material: Polystyrene / ABS grey
 Polyethylene
 Filter material: Polyurethane soft foam
 Glue: Cyanacrylate - adhesive
 Connection nozzle: Polystyrene white / ABS grey

Technical Data

Operating pressure max.: 0,8 bar
 Temperature resistance PS: max. 70°C
 Temperature resistance ABS: max. 100°C
 Medium: Air
 Connection nozzle: conical

Order Data

Art. No.	Connector for hose Lw mm	L mm	L1 mm	L2 mm	D mm	D1 mm	D2 mm	D3 mm	Weight	Material
LYD0500.052	6	80,0	13,5	53,0	7,6	29,0	33,0	4,0	14 g	PS
LYD0501.052	6	80,0	13,5	53,0	7,6	29,0	33,0	4,0	15 g	ABS

Flow

Pressure mbar	-10	-20	-30	-50	-70	-80	-90	-100	-140
Suction-side l/min	6,2	8,2	9,8	11,2	12,3	13,3	13,7	14,2	15,5
Pressure-side l/min	4,1	6,6	9,6	14,6	18,7	21,9	23,8	24,9	32,6



■ TYP 60 - Double silencer with aluminium filter



Materials

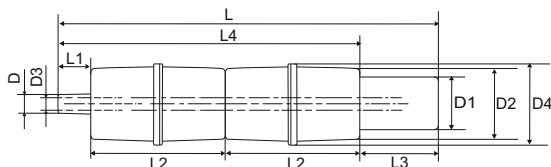
Housing material: Polystyrene white / black / ABS grey
 Inside part material: Polystyrene / ABS grey
 Polyethylene
 Filter material: Polyurethane soft foam
 Glue: Cyanacrylate - adhesive
 Connection nozzle: Polystyrene white / ABS grey
 Connection parts: brass bright
 Aluminium filter: Aluminium and felt material

Technical Data

Operating pressure max.: 0,8 bar
 Temperature resistance PS: max. 70°C
 Temperature resistance ABS: max. 100°C
 Medium: Air
 Connection nozzle: conical

Order Data

Art. No.	Connector for hose Lw mm	L mm	L1 mm	L2 mm	L3 mm	L4 mm	D mm	D1 mm	D2 mm	D3 mm	D4 mm	Weight	Material
LYD0500.060	6	149,0	13,5	53,0	29,5	119,5	7,6	20,0	29,0	4,0	33,0	33 g	PS
LYD0501.060	6	149,0	13,5	53,0	29,5	119,5	7,6	20,0	29,0	4,0	33,0	34 g	ABS



Flow

Pressure mbar	-10	-20	-30	-50	-70	-80	-90	-100	-140
Suction-side l/min	3,0	5,5	8,0	11,0	14,5	16,0	17,0	18,5	21,0
Pressure-side l/min	5,5	8,0	10,0	14,0	16,5	18,0	19,0	19,5	25,5



■ TYP 61 - Double silencer with filter & elbow fittings



Materials

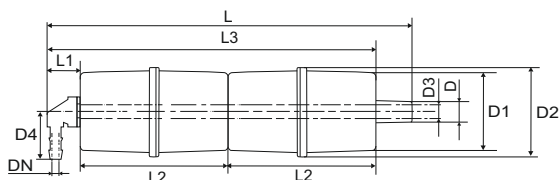
Housing material: Polystyrene white / black / ABS grey
 Inside part material: Polystyrene / ABS grey
 Polyethylene
 Filter material: Polyurethane soft foam
 Glue: Cyanacrylate - adhesive
 Connection nozzle: Polystyrene white / ABS grey
 Elbow fittings: Polyamide
 Connection parts: brass bright

Technical Data

Operating pressure max.: 0,8 bar
 Temperature resistance PS: max. 70°C
 Temperature resistance ABS: max. 100°C
 Medium: Air
 Connection nozzle: conical

Order Data

Art. No.	Connector for hose Lw mm	L mm	L1 mm	L2 mm	L3 mm	D mm	D1 mm	D2 mm	D3 mm	D4 mm	DN mm	Weight	Material
LYD0500.061	6	130,0	10,5	53,0	116,5	7,6	29,0	33,0	4,0	29,0	2,7	30 g	PS
LYD0501.061	6	130,0	10,5	53,0	116,5	7,6	29,0	33,0	4,0	29,0	2,7	31 g	ABS



Flow

Pressure mbar	-10	-20	-30	-50	-70	-80	-90	-100	-140
Suction-side l/min	4,8	6,2	7,9	10,4	12,6	13,5	14,2	15,2	18,3
Pressure-side l/min	2,4	5,0	7,1	9,2	11,8	12,7	13,5	14,7	18,4



■ TYP 62 - Double silencer with filter & 2 elbow fittings

Materials

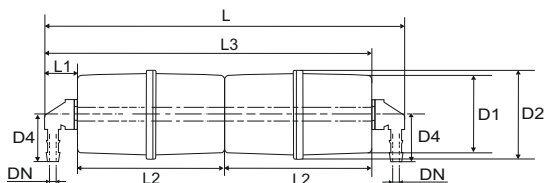
Housing material: Polystyrene white / black / ABS grey
 Inside part material: Polystyrene / ABS grey
 Polyethylene
 Filter material: Polyurethane soft foam
 Glue: Cyanacrylate - adhesive
 Connection nozzle: Polystyrene white / ABS grey
 Elbow fittings: Polyamide
 Connection parts: brass bright

Technical Data

Operating pressure max.: 0,8 bar
 Temperature resistance PS: max. 70°C
 Temperature resistance ABS: max. 100°C
 Medium: Air
 Connection nozzle: conical

Order Data

Art. No.	Connector for hose Lw mm	L mm	L1 mm	L2 mm	L3 mm	D1 mm	D2 mm	DN mm	D4 mm	Weight	Material
LYD0500.062	6	131,0	10,5	53,0	116,5	29,0	33,0	2,7	29,0	30 g	PS
LYD0501.062	6	131,0	10,5	53,0	116,5	29,0	33,0	2,7	29,0	31 g	ABS



Flow

Pressure mbar	-10	-20	-30	-50	-70	-80	-90	-100	-140
Suction-side l/min	4,8	6,2	7,9	10,4	12,6	13,5	14,2	15,2	18,3
Pressure-side l/min	2,4	5,0	7,1	9,2	11,8	12,7	13,5	14,7	18,4



■ TYP 63 - Double silencer with filter elements

Materials

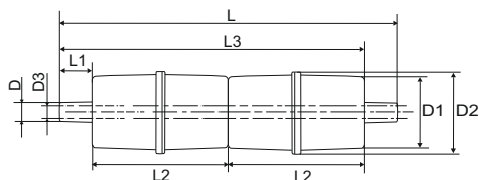
Housing material: Polystyrene white / black / ABS grey
 Inside part material: Polystyrene / ABS grey
 Polyethylene
 Filter material: Polyurethane soft foam
 Glue: Cyanacrylate - adhesive
 Connection nozzle: Polystyrene white / ABS grey

Technical Data

Operating pressure max.: 0,8 bar
 Temperature resistance PS: max. 70°C
 Temperature resistance ABS: max. 100°C
 Medium: Air
 Connection nozzle: conical

Order Data

Art. No.	Connector for hose Lw mm	L mm	L1 mm	L2 mm	L3 mm	D mm	D1 mm	D2 mm	D3 mm	D4 mm	DN mm	Weight	Material
LYD0500.063	6	133,0	13,5	53,0	119,5	7,6	29,0	33,0	4,0	29,0	2,7	27 g	PS
LYD0501.063	6	133,0	13,5	53,0	119,5	7,6	29,0	33,0	4,0	29,0	2,7	28 g	ABS



Flow

Pressure mbar	-10	-20	-30	-50	-70	-80	-90	-100	-140
Suction-side l/min	7,5	10,4	12,6	16,8	19,6	21,3	22,9	23,9	29,2
Pressure-side l/min	3,7	6,8	10,8	14,2	19,4	21,4	23,4	24,8	18,4



■ TYP 64 - Double silencer with 4 filter elements

Materials

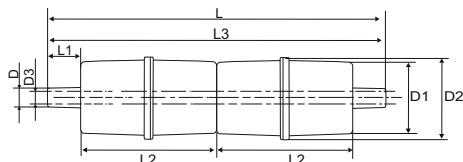
Housing material: Polystyrene white / black / ABS grey
 Inside part material: Polystyrene / ABS grey
 Polyethylene
 Filter material: Polyurethane soft foam
 Glue: Cyanacrylate - adhesive
 Connection nozzle: Polystyrene white / ABS grey

Technical Data

Operating pressure max.: 0,8 bar
 Temperature resistance PS: max. 70°C
 Temperature resistance ABS: max. 100°C
 Medium: Air
 Connection nozzle: conical

Order Data

Art. No.	Connector for hose Lw mm	L mm	L1 mm	L2 mm	L3 mm	D mm	D1 mm	D2 mm	D3 mm	D4 mm	DN mm	Weight	Material
LYD0500.064	6	133,0	13,5	53,0	119,5	7,6	29,0	33,0	4,0	29,0	2,7	27 g	PS
LYD0501.064	6	133,0	13,5	53,0	119,5	7,6	29,0	33,0	4,0	29,0	2,7	28 g	ABS



Flow

Pressure mbar	-10	-20	-30	-50	-70	-80	-90	-100	-140
Suction-side l/min	4,1	5,5	7,0	9,8	11,2	12,4	12,8	13,9	15,4
Pressure-side l/min	2,8	4,8	6,2	9,3	12,2	13,5	14,4	16,1	20,3

■ TIP:

Sound and temperature can be improved by mounting position and the appropriate material of the hose.

SPECIAL MANUFACTURE, such as, for example other hose connection at your request:

Metzger Technik GmbH & Co. KG
 Bertha-Benz-Straße 1
 D - 71665 Vaihingen a. d. Enz

Tel. +49 (0) 7042 / 81518 - 0
 Fax +49 (0) 7042 / 81518 - 80

Mail: info@metzger-technik.de



